

Customer :

customer

Customer part :

customer part

Comment :

Comment

S1=1.53

S2=2.07

Tmax=456

Tp S2=495.0

PI=0.43

HI=111

Sample =1658.10

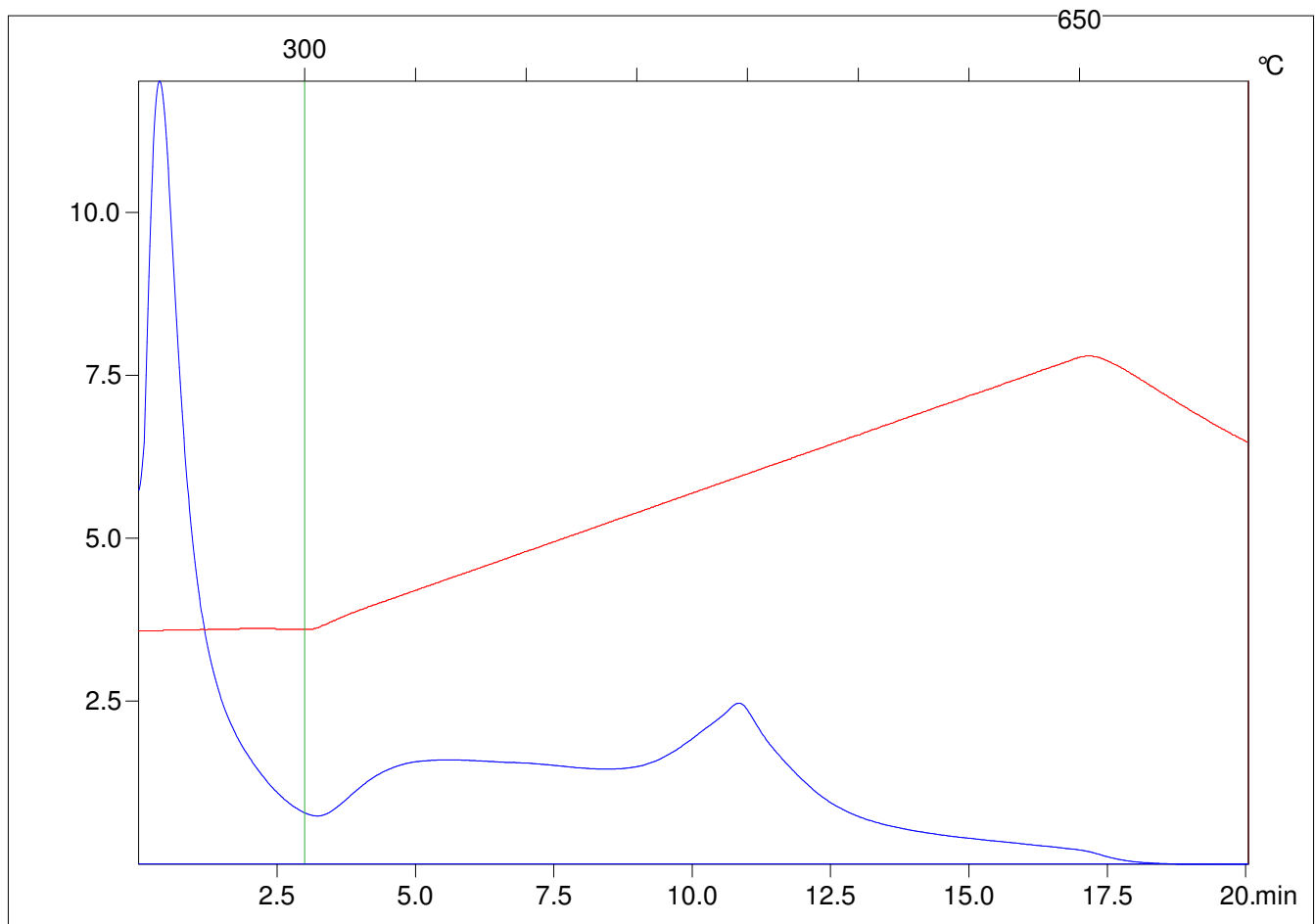
Method =Bulk Rock

Cycle=Basic

KFID(10*9)=1444

Qty =70.6

TOC=1.86



C:\VINCI\PK1792\PK084.R00 : FID pyrolysis graphic

State

Pyro Status

Oxi Status